



Title: Setup connection Logging for version5.0+

Abstract: Setup up connection Logging.

Product	EasyReporting Toolset
Suite	Technical
Release	Version 5 +
Document ID	SetupConnectionLoggingVersion5+.docx
Date Created	24 May 2018
Date Reviewed	15 July 2019
Date Revised	15 July 2019

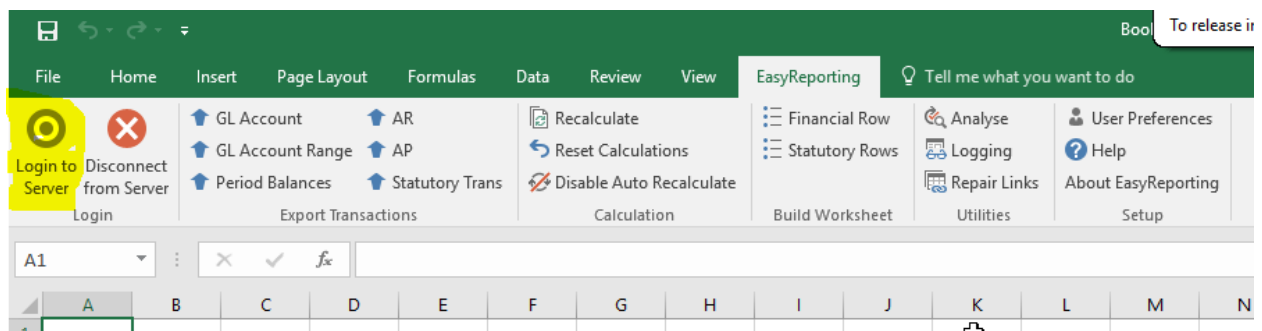
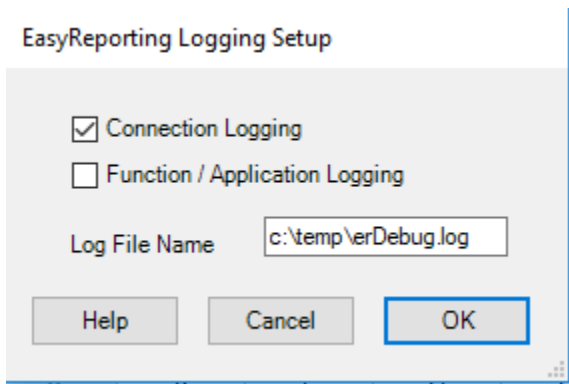
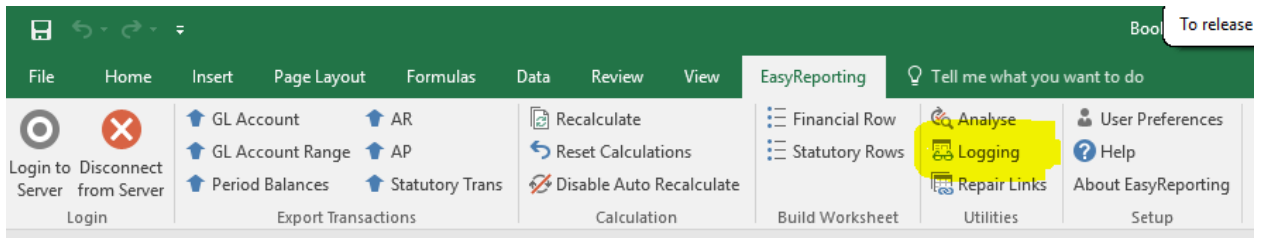
Overview

Setup of connection logging to diagnose connection issues to the JDE server. The log produced will show:

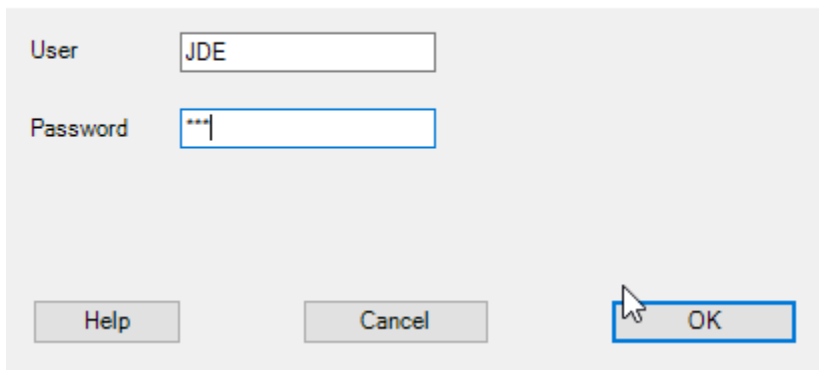
- SQL commands and connection details.
- ODBC DSN used to connect to the server.
- Library names or Table Owners.

The steps are:

1. Open Excel
2. Select "Logging" in the EasyReporting ribbon and checking the box "Connection Logging".
3. Check the location where the log files to be written is valid.
4. Login to Server
5. Review the logs



Connect to Server



EasyReporting Debug Log

=====

Created 15/07/2019 8:41:21 PM

Windows Version : 10.0.18362.0
Microsoft Excel Version: Excel 2016 64bit
EasyReporting Version : 5.0.0.12
Database :
Use World Security :
Use E1 Web Security :
DSN :
User ID :

15/07/2019 8:41:21 PM EasyReporting CONNECTION LOG
15/07/2019 8:41:21 PM LOADING EASYREPORTING LOGIN FORM
15/07/2019 8:41:21 PM Windows 64bit : True
15/07/2019 8:41:21 PM Excel 32bit : False
15/07/2019 8:41:21 PM Registry section to get EasyReporting values: Software\EasyReporting
15/07/2019 8:41:21 PM GET EASYREPORTING DEFAULT VALUES
15/07/2019 8:41:22 PM Getting Environment registry settings for : DEFAULT
15/07/2019 8:41:22 PM Registry section : Software\EasyReporting
15/07/2019 8:41:22 PM Database type : SQLSERVER
15/07/2019 8:41:22 PM ODBC DSN used : SQL SERVER XE
15/07/2019 8:41:22 PM Registry details for Owner or Library Name : Software\EasyReporting
15/07/2019 8:41:22 PM Get library name from registry : proddta
15/07/2019 8:41:22 PM Get DEFAULT values from Registry.
15/07/2019 8:41:28 PM GET REGISTRY DETAILS TO BE USED IN LOGIN
15/07/2019 8:41:28 PM Getting Environment registry settings for : DEFAULT
15/07/2019 8:41:28 PM Registry section : Software\EasyReporting
15/07/2019 8:41:28 PM Database type : SQLSERVER
15/07/2019 8:41:28 PM ODBC DSN used : SQL SERVER XE
15/07/2019 8:41:28 PM Registry details for Owner or Library Name : Software\EasyReporting
15/07/2019 8:41:28 PM Get library name from registry : proddta
15/07/2019 8:41:28 PM ACTUAL login details.
15/07/2019 8:41:28 PM User ID : JDE
15/07/2019 8:41:28 PM Environment : DEFAULT
15/07/2019 8:41:28 PM Network Authentication: : FALSE
15/07/2019 8:41:28 PM START Call SetRstConnectOptions
15/07/2019 8:41:28 PM SetRstConnectOptions: Connection options set.
15/07/2019 8:41:28 PM FINISH Call SetRstConnectOptions
15/07/2019 8:41:28 PM START Call openDBConnection
15/07/2019 8:41:28 PM OpenDBConnection: In progress.
15/07/2019 8:41:28 PM Environment:DEFAULT
15/07/2019 8:41:28 PM OpenDBConnection: Now opening DB Connection.
15/07/2019 8:41:28 PM User:JDE
15/07/2019 8:41:28 PM Using the DSN:SQL SERVER XE
15/07/2019 8:41:28 PM Now opening DB connection cnn.
15/07/2019 8:41:29 PM OpenDBConnection:DB Connection 1 Established.
15/07/2019 8:41:29 PM Now opening DB connection cnn2.

15/07/2019 8:41:29 PM OpenDBConnection:DB Connection 1 Established.
15/07/2019 8:41:29 PM Now opening DB connection cnn2.
15/07/2019 8:41:29 PM OpenDBConnection:DB Connection 2 Established.
15/07/2019 8:41:29 PM FINISH Call openDBConnection
15/07/2019 8:41:29 PM START Call GetTableOverrides
15/07/2019 8:41:29 PM GetTableOverrides: Now checking.
15/07/2019 8:41:29 PM GetTableOverrides: Getting EasyReporting registry settings for Table Overrides.
15/07/2019 8:41:29 PM GetTableOverrides: Environment = DEFAULT
15/07/2019 8:41:29 PM FINISH Getting ER registry settings for Table Overrides.
15/07/2019 8:41:29 PM GetTableOverrides: Get table Over rides SQL = SELECT F0005.DRKY, F0005.DRDL01 FROM PRODCTL.F0005 F0005 WHERE F0005.DRSY = '55' AND F0005.DRRT = 'ER'
15/07/2019 8:41:29 PM GetTableOverrides: Over ride Table = F0001 Library dbo
15/07/2019 8:41:29 PM GetTableOverrides: Over ride Table = F0004 Library PRODCTL
15/07/2019 8:41:29 PM GetTableOverrides: Over ride Table = F0005 Library PRODCTL
15/07/2019 8:41:29 PM GetTableOverrides: Over ride Table = F0005D Library PRODCTL
15/07/2019 8:41:29 PM GetTableOverrides: Over ride Table = F0092 Library SVM7333
15/07/2019 8:41:29 PM GetTableOverrides: Table over rides found for 5 rows.
15/07/2019 8:41:29 PM FINISH Call GetTableOverrides
15/07/2019 8:41:29 PM START Check EasyReporting Excel Addin is enabled
15/07/2019 8:41:29 PM START Call CheckDataRead
15/07/2019 8:41:29 PM Function : GetCompanyName
15/07/2019 8:41:29 PM Company : 00000
15/07/2019 8:41:29 PM SQL : SELECT F0010.CCCO, F0010.CCNAME ,F0010.CCDDFF ,F0010.CCPNF FROM proddta.F0010 F0010 WHERE (F0010.CCCO = '00000')
15/07/2019 8:41:29 PM GetCompanyName : J.D. Edwards & Company
15/07/2019 8:41:29 PM CheckDataRead results success = True
15/07/2019 8:41:29 PM FINISH Call CheckDataRead
15/07/2019 8:41:29 PM START ResetEasyReportingCache
15/07/2019 8:41:29 PM ResetEasyReportingCache: Completed
15/07/2019 8:41:29 PM FINISH ResetEasyReportingCache
15/07/2019 8:41:29 PM START call GetProfitLossRange 00000
15/07/2019 8:41:29 PM START GetAAIObject
15/07/2019 8:41:29 PM GetAAIObject SQL = SELECT F0012.KG0BJ FROM proddta.F0012 F0012 WHERE F0012.KGITEM = 'GLG6 ' AND F0012.KGCO = '00000'
15/07/2019 8:41:29 PM GetAAIObject = 5000
15/07/2019 8:41:29 PM GetAAIObject SQL = SELECT F0012.KG0BJ FROM proddta.F0012 F0012 WHERE F0012.KGITEM = 'GLG12 ' AND F0012.KGCO = '00000'
15/07/2019 8:41:29 PM GetAAIObject = 9999
15/07/2019 8:41:29 PM FINISH GetAAIObject
15/07/2019 8:41:29 PM FINISH call GetProfitLossRange 00000
15/07/2019 8:41:29 PM START call getMultCurrencyFlag
15/07/2019 8:41:29 PM getMultCurrencyFlag: SQL = SELECT F0010.CCCRYR FROM proddta.F0010 F0010 WHERE F0010.CCCO = '00000'
15/07/2019 8:41:29 PM getMultCurrencyFlag: MultiCurrency flag set to:Z
15/07/2019 8:41:29 PM FINISH call getMultCurrencyFlag
15/07/2019 8:41:30 PM Excel Version is Excel 2016
15/07/2019 8:41:30 PM Maximum Excel rows set to 1048576
15/07/2019 8:41:30 PM END OF LOG